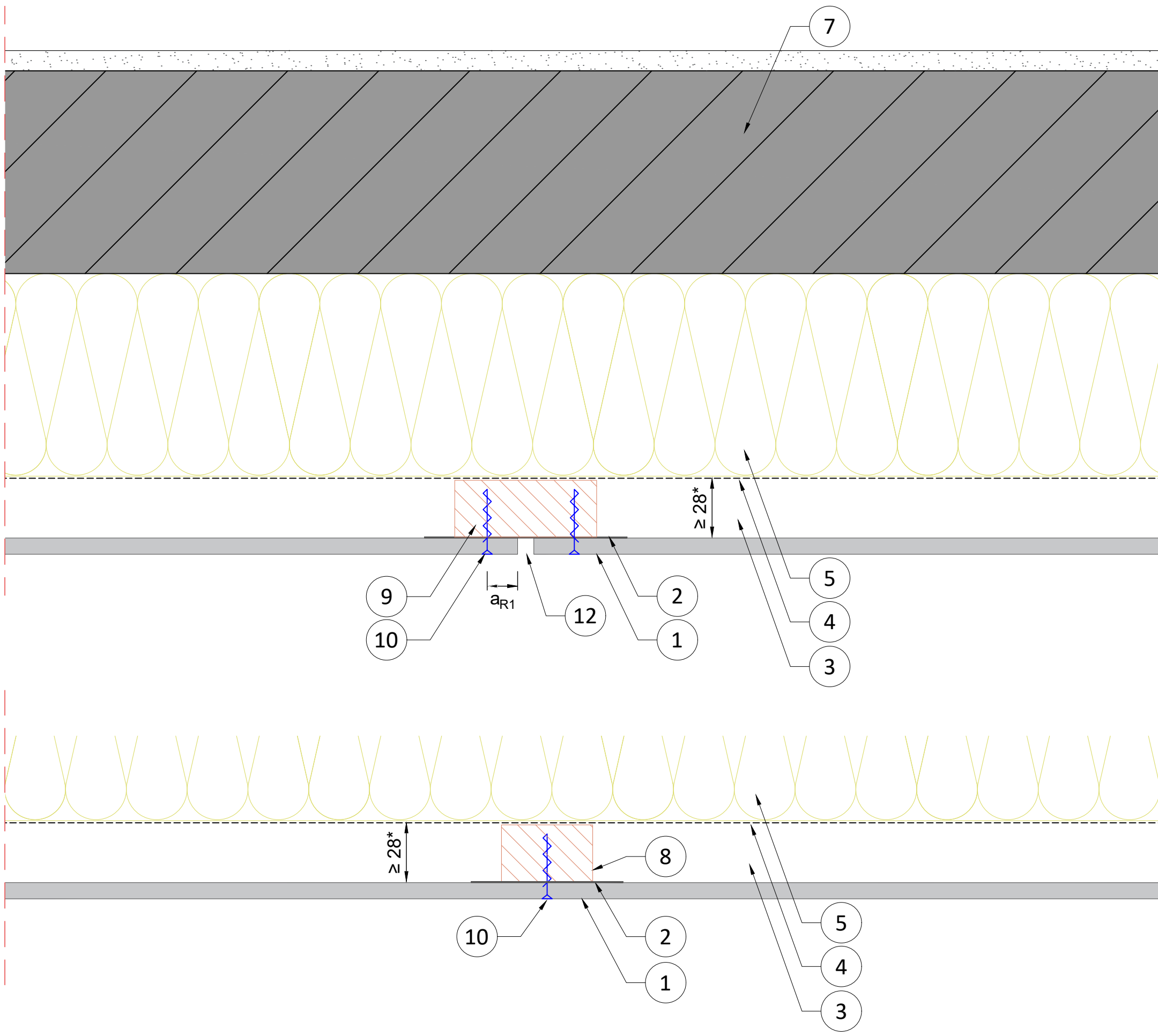


NUMBER
RP A2 8 TIM MEC
 BOARD - SUB-CONSTRUCTION
A2 8 mm - Timber subconstruction
 SECTION - DETAIL
Front Page - Overview
 DESCRIPTION
Details overview

DATE - VERSION
 01.01.2025
 SCALE - PAPER
 Scale 1:20 on A3 print

LANGUAGE
 All
 PAGE - NUMBER
 Page 01/10





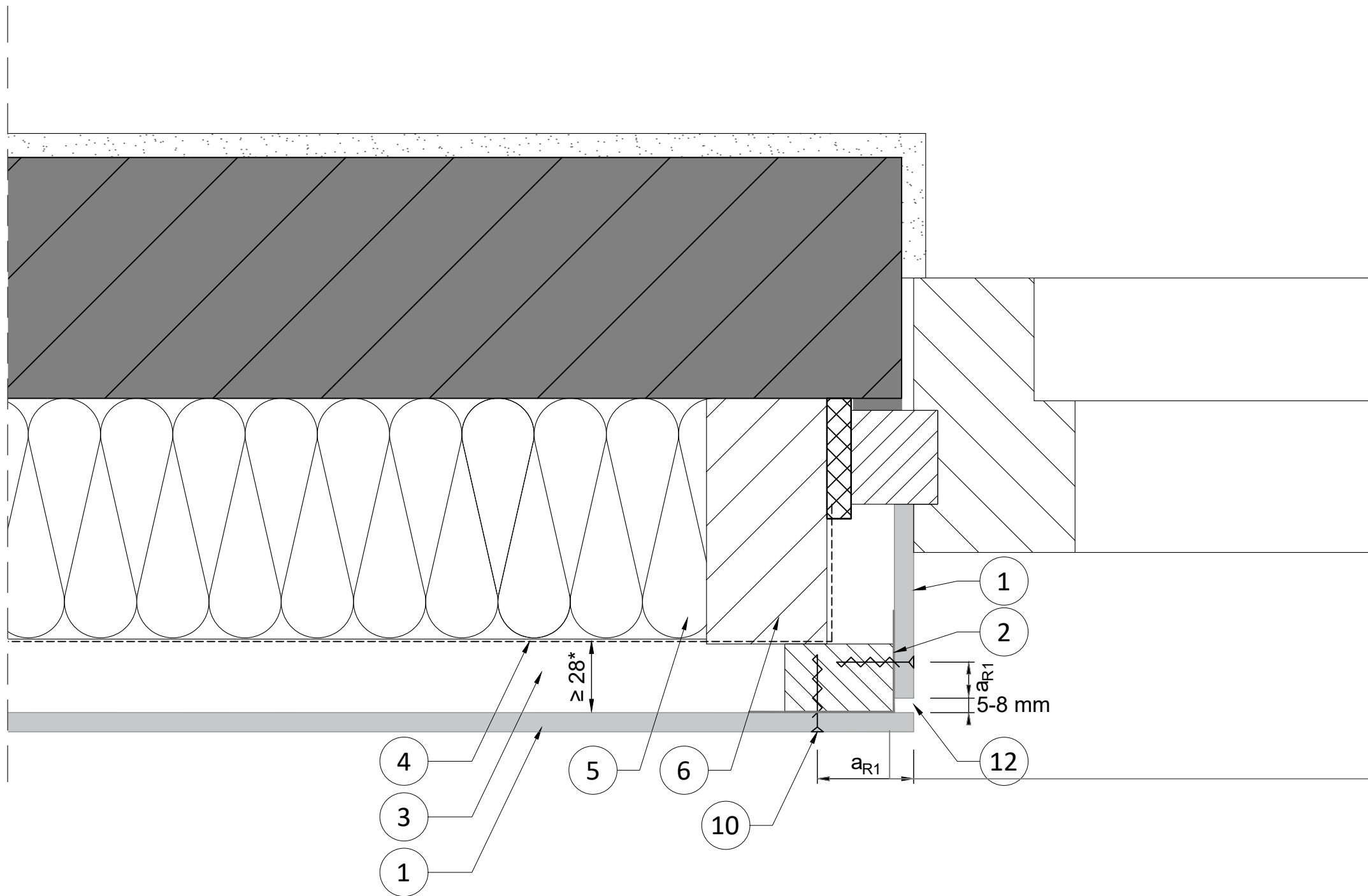
NUMBER
RP A2 8 TIM MEC - H.01

BOARD - SUB-CONSTRUCTION
A2 8 mm - Timber Mechanically Fixed
 SECTION - DETAIL
Horizontal section - Detail 01
 DESCRIPTION
Junction vertical joint

DATE - VERSION
 01.01.2024
 SCALE - PAPER
 Scale 1:2 on A3 print

LANGUAGE
 All
 PAGE - NUMBER
 Page 02/10



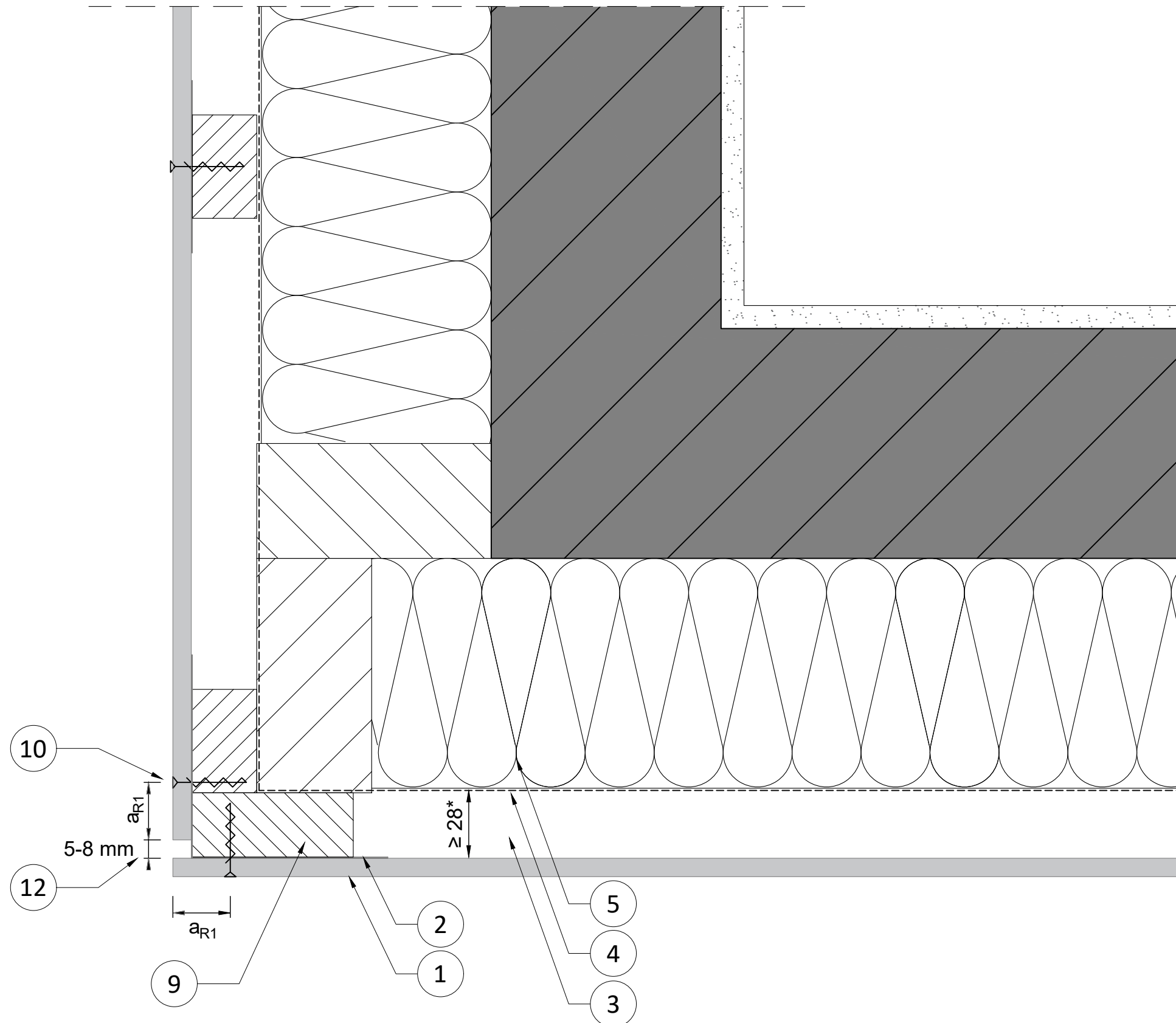


NUMBER
RP A2 8 TIM MEC - H.02

BOARD - SUB-CONSTRUCTION
 A2 8 mm - Timber Mechanically Fixed
 SECTION - DETAIL
 Horizontal section - Detail 02
 DESCRIPTION
 Window junction

DATE - VERSION
 01.01.2025
 SCALE - PAPER
 Scale 1:2 on A3 print

LANGUAGE
 All
 PAGE - NUMBER
 Page 03/10



NUMBER
RP A2 8 TIM MEC - H.03

BOARD - SUB-CONSTRUCTION
A2 8 mm - Timber Mechanically Fixed

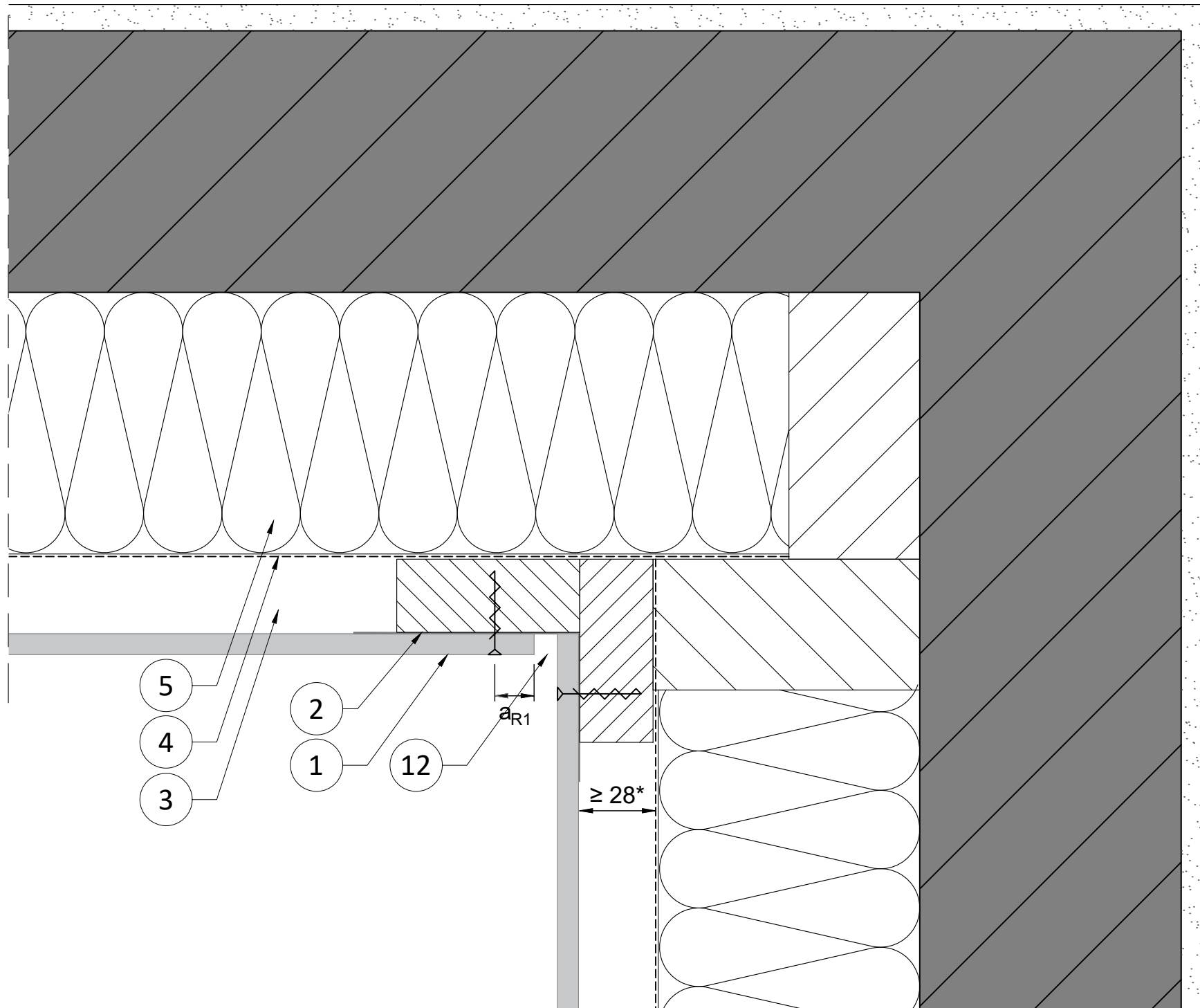
SECTION - DETAIL
Horizontal section - Detail 03

DESCRIPTION
Junction vertical joint

DATE - VERSION
 01.01.2025
 SCALE - PAPER
 Scale 1:2 on A3 print

LANGUAGE
 All
 PAGE - NUMBER
 Page 04/10





NUMBER
RP A2 8 TIM MEC - H.04

BOARD - SUB-CONSTRUCTION
A2 8 mm - Timber Mechanically Fixed

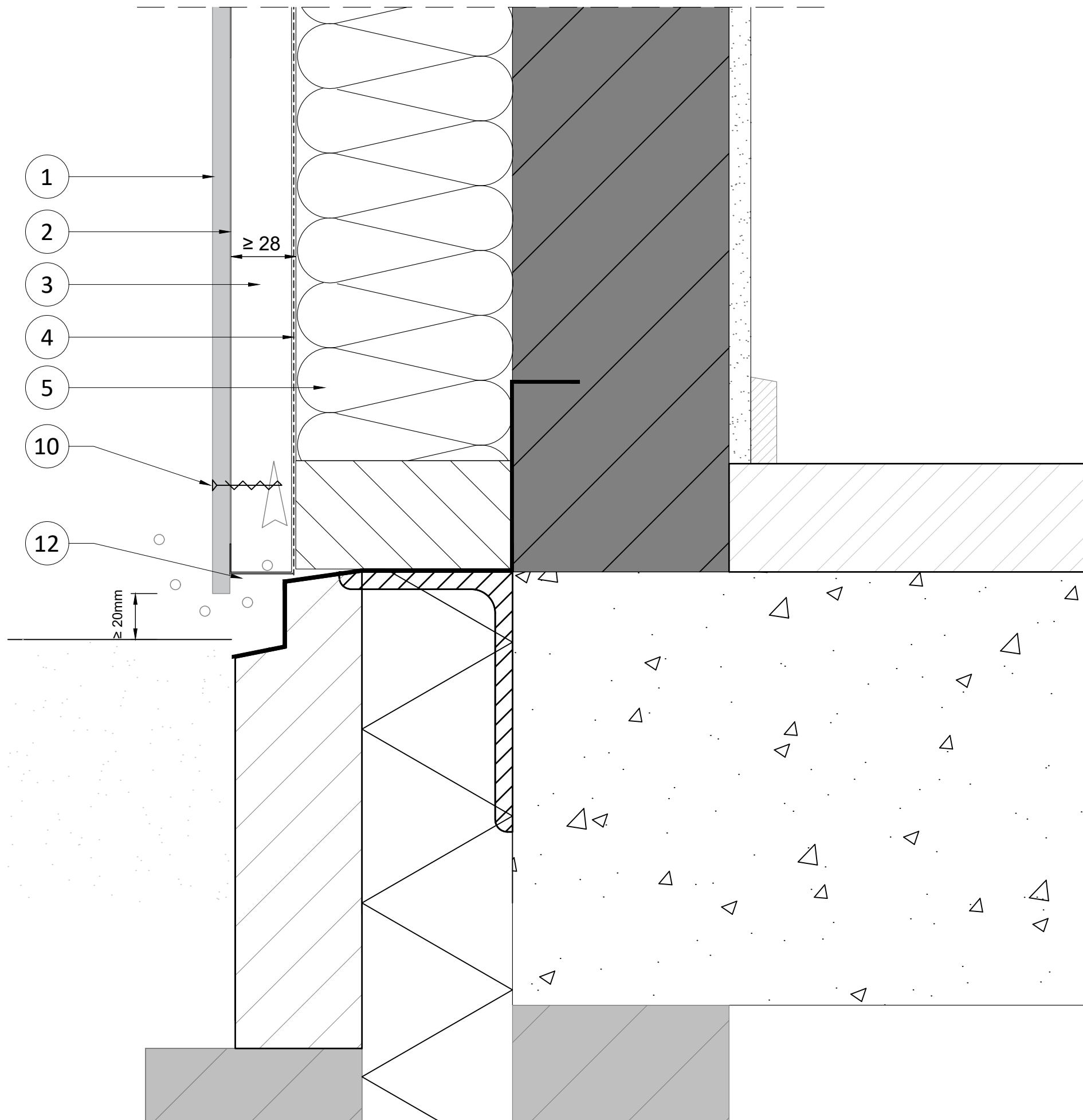
SECTION - DETAIL
Horizontal section - Detail 04

DESCRIPTION
Internal Corner

DATE - VERSION
 01.01.2025
 SCALE - PAPER
 Scale 1:2 on A3 print

LANGUAGE
 All
 PAGE - NUMBER
 Page 05/10





NUMBER
RP A2 8 TIM MEC - V.01

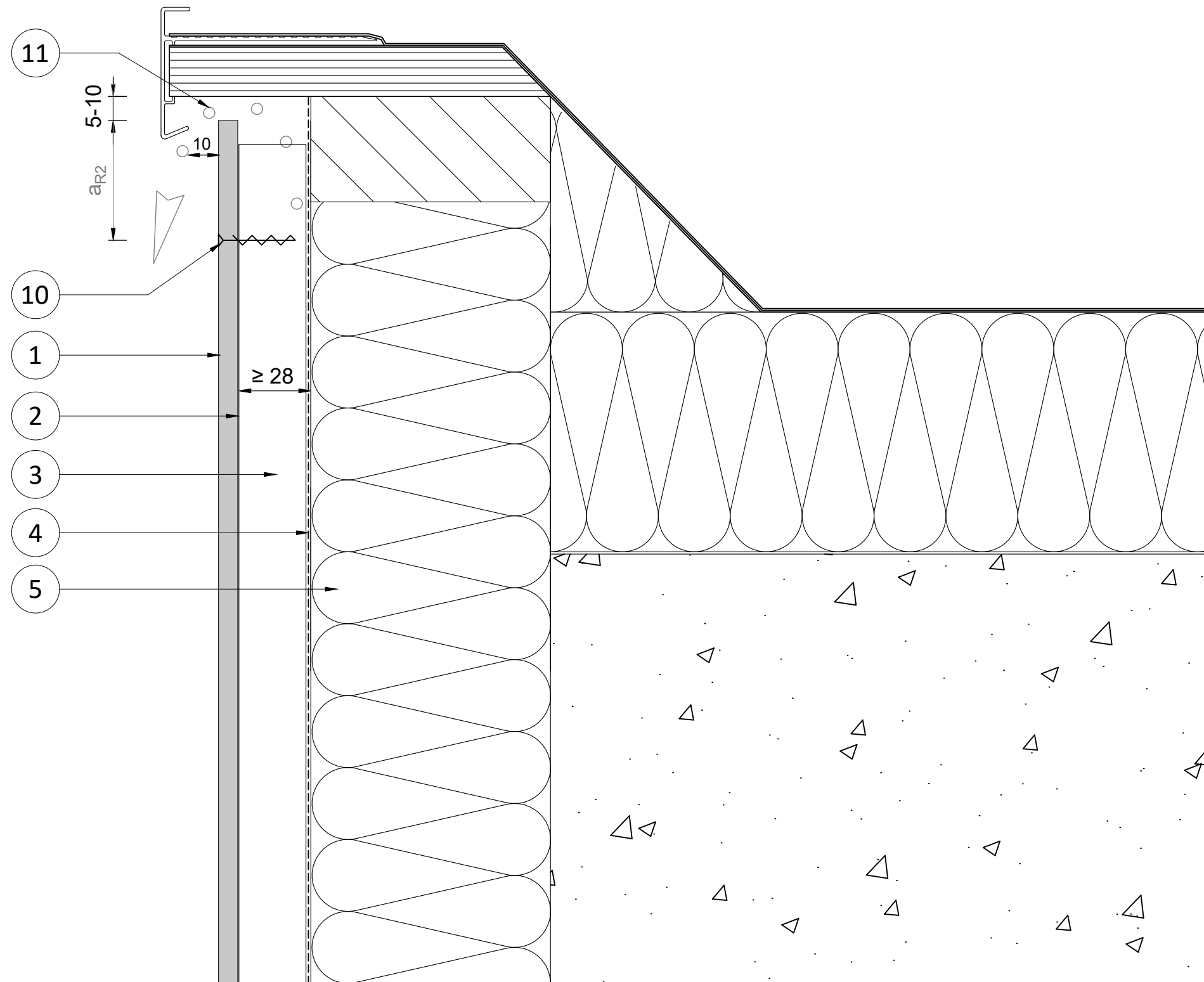
BOARD - SUB-CONSTRUCTION
A2 8 mm - Timber Mechanically Fixed
 SECTION - DETAIL
Vertical section - Detail 01

DESCRIPTION
Junction vertical joint

DATE - VERSION
 01.01.2025
 SCALE - PAPER
 Scale 1:2 on A3 print

LANGUAGE
 All
 PAGE - NUMBER
 Page 06/10





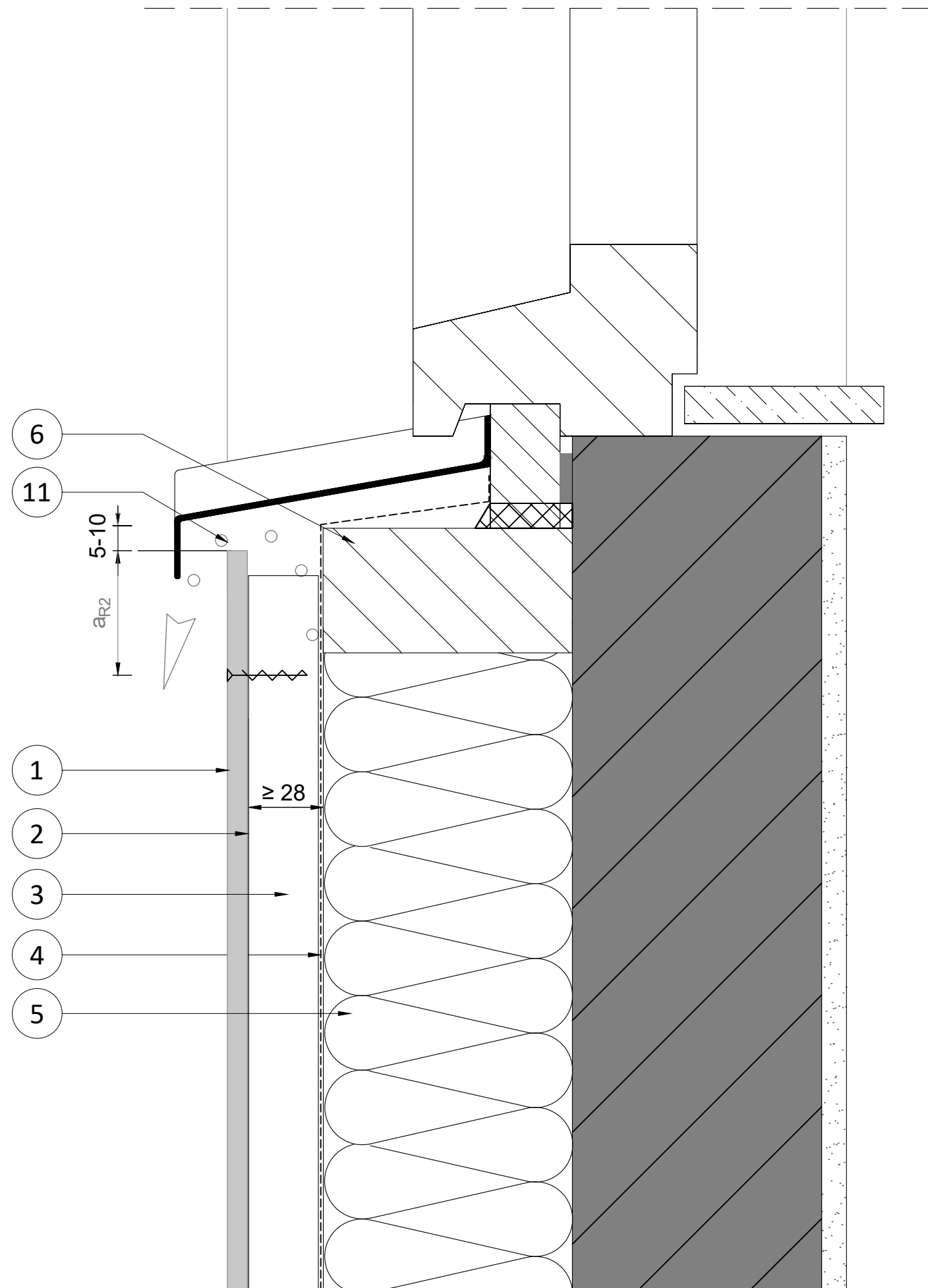
NUMBER
RP A2 8 TIM MEC - V.02

BOARD - SUB-CONSTRUCTION
A2 8 mm - Timber Mechanically Fixed
 SECTION - DETAIL
Vertical section - Detail 02
 DESCRIPTION
Roof trim - parapet

DATE - VERSION
 01.01.2025
 SCALE - PAPER
 Scale 1:2 on A3 print

LANGUAGE
 All
 PAGE - NUMBER
 Page 07/10





NUMBER
RP A2 8 TIM MEC - V.03

BOARD - SUB-CONSTRUCTION
A2 8 mm - Timber Mechanically Fixed

SECTION - DETAIL
Vertical section - Detail 03

DESCRIPTION
Junction window-sill

DATE - VERSION

01.01.2025

SCALE - PAPER

Scale 1:2 on A3 print

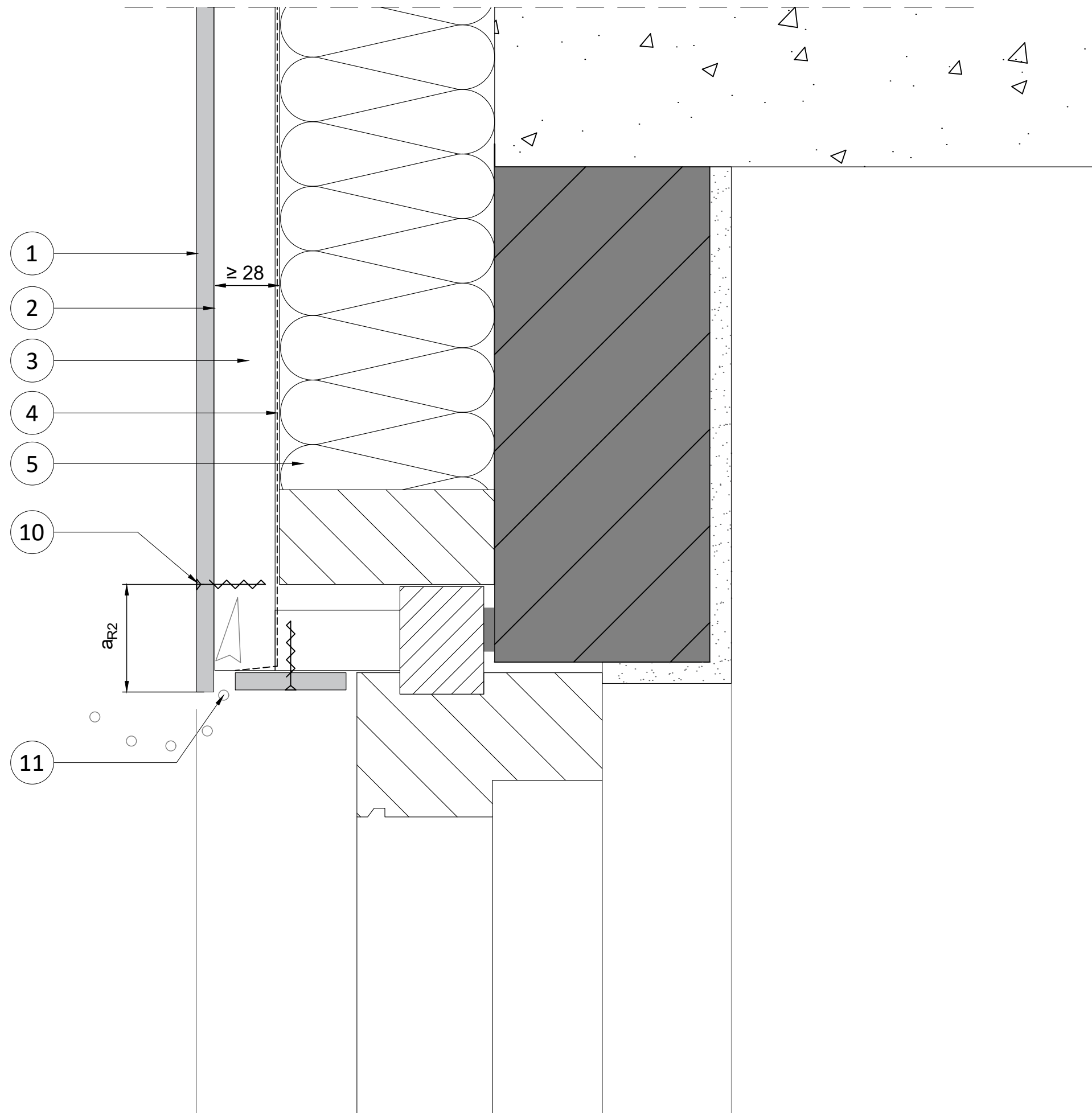
LANGUAGE

All

PAGE - NUMBER

Page 08/10





NUMBER
RP A2 8 TIM MEC - V.04

BOARD - SUB-CONSTRUCTION
A2 8 mm - Timber Mechanically Fixed

SECTION - DETAIL
Vertical section - Detail 04

DESCRIPTION
Junction window header

DATE - VERSION
 01.01.2025

SCALE - PAPER
 Scale 1:2 on A3 print

LANGUAGE
 All

PAGE - NUMBER
 Page 09/10

	EN	NL	DE	FR	PL
1	Rockpanel A2 8 mm	Rockpanel A2 8 mm	Rockpanel A2 8 mm	Rockpanel A2 8 mm	Rockpanel A2 8 mm
2	EPDM foam gasket	EPDM Schuimvoegband	EPDM-Schaumfugenband	Bande d'étanchéité EPDM	Uszczelka piankowa EPDM
3	Air cavity	Luchtspouw	Hinterlüftungsraum	Lame d'air	Szczelina wentylacja
4	Breathable membrane	Waterkerende dampdoorlatende diffusie-folie	diffusionsoffene Folie	Pare-pluie	Wiatroizolacja
5	Insulation (ROCKWOOL)	Steenwolisolatie (ROCKWOOL)	Dämmung (ROCKWOOL)	Isolation (ROCKWOOL)	Izolacja (ROCKWOOL)
6	Timber construction	Houten constructie	Konterlatten	Construction Bois	Konstrukcja drewniana
7	Inner wall	Binnenblad	Verankerungsgrund	Mur intérieur	Ściana wewnętrzna
8	Timber battens ≥ 28 x 45mm	Houten regels ≥ 28 x 45mm	Holzlatten ≥ 28 x 45mm	Chevrons ≥ 28 x 45mm	Listwa drewniana ≥ 28 x 45mm
9	Timber battens ≥ 28 x 70mm	Houten regels ≥ 28 x 70mm	Holzlatten ≥ 28 x 70mm	Chevrons ≥ 28 x 70mm	Listwa drewniana ≥ 28 x 70mm
10	Rockpanel fixing	Rockpanel bevestigiger	Rockpanel befestiger	Fixation Rockpanel	Łącznik Rockpanel
11	Ventilation opening	Ventilatieopening	Lüftungsspalt	Vide de ventilation	Szczelina wentylacyjna
12	Joint from 5 to 8 mm	Voeg van 5 tot 8 mm	Fuge von 5 bis 8 mm	Joint de 5 à 8 mm	Łączenie od 5 do 8 mm
aR1	≥ 15 mm	≥ 15 mm	≥ 15 mm	≥ 15 mm	≥ 15 mm
aR2	≥ 50 mm	≥ 50 mm	≥ 50 mm	≥ 50 mm	≥ 50 mm

	EN	DK	NO	SE	FI
1	Rockpanel A2 8 mm	Rockpanel A2 8 mm	Rockpanel A2 8 mm	Rockpanel A2 8 mm	Rockpanel A2 8 mm
2	EPDM foam gasket	EPDM skumfugebånd	EPDM-pakning	EPDM skumgummiremsa	EPDM-nauha
3	Air cavity	Ventilation	Luft hulrom	Luftspalt	Tuuletusväli
4	Breathable membrane	Diffusionsåben folie	Pustende membran / dampgjennomtrengelig folie	Diffusionsöppet membrane	Tuulensuojakangas
5	Insulation (ROCKWOOL)	Isolering (ROCKWOOL)	Isolasjon (ROCKWOOL)	Isolering (ROCKWOOL)	Eriste (ROCKWOOL)
6	Timber construction	Trækonstruktion	Trekonstruksjon	Träkonstruktion	Puurunko
7	Inner wall	Indvendig væg	Innervegg	Innevägg	Kantava runko
8	Timber battens ≥ 28 x 45mm	Træ lægter ≥ 28 x 45mm	Tømmerlekker ≥ 28 x 45mm	Träläkt ≥ 28 x 45mm	Puurangat ≥ 28 x 45mm
9	Timber battens ≥ 28 x 70mm	Træ lægter ≥ 28 x 70mm	Tømmerlekker ≥ 28 x 70mm	Träläkt ≥ 28 x 70mm	Puurangat ≥ 28 x 70mm
10	Rockpanel fixing	Rockpanel fastgørelse	Rockpanel feste	Rockpanel infästning	Rockpanel-kiinnike
11	Ventilation opening	Ventilation	Ventilasjonsåpning	Ventilationsöppning	Tuuletusvälin suuaukko
12	Joint from 5 to 8 mm	Samling fra 5 til 8 mm	Skjøtene (5-8 mm)	Fog från 5 till 8 mm	Sauma 5-8 mm
aR1	≥ 15 mm	≥ 15 mm	≥ 15 mm	≥ 15 mm	≥ 15 mm
aR2	≥ 50 mm	≥ 50 mm	≥ 50 mm	≥ 50 mm	≥ 50 mm

NUMBER
RP A2 8 TIM MEC

BOARD - SUB-CONSTRUCTION
A2 8 mm - Timber Mechanically Fixed

SECTION - DETAIL
Descriptions and translations

