



Conlit® Intumescent Pipe Wrap

Fire stop solution for plastic pipe penetrations

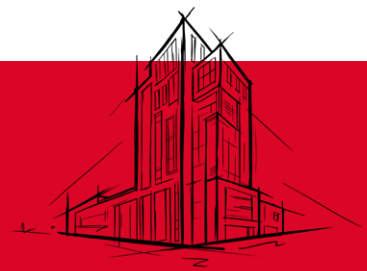
Conlit Intumescent Pipe Wrap are designed to seal service penetrations in apertures containing combustible plastic pipes. Pipe Wraps comprise layers of a graphite based intumescent sheet encapsulated in a polythene sheath. All Pipe Wraps are supplied in correct lengths to suit the pipe diameter.

Conlit Intumescent Pipe Wrap are tested to plastic services penetrating flexible and rigid wall constructions, rigid floors and in Conlit Ablative Liquid coated slab.

Conlit Intumescent Pipe Wrap are tested with end capping configurations that cover U/C pipes.

- Simple to install with no mechanical fixings required
- Available to suit pipe diameters up to 250mm O.D.
- Up to EI 120* fire resistance
- Tested in conjunction with Conlit Ablative Liquid coated slab
- Dry system
- Water resistant

* Subject to the application



Conlit Intumescent Pipe Wraps are tested to EN 1366-3:2009.

They offer a simple and more economical alternative to Firestop Pipe Collars, for fire stopping plastic pipework penetrations through fire rated walls and floors.

Conlit® Intumescent Pipe Wrap



APPLICATIONS

- Fire stopping plastic pipe penetrations in rigid/flexible walls and rigid floors
- Can be applied to PVC, UPVC, Polypropylene, PE & HDPE pipe materials

For a fully comprehensive list of applications please refer to the appropriate ROCKWOOL standard details available at www.rockwoolasia.com or contact the **ROCKWOOL Technical Solutions Team**.

PERFORMANCE

Fire performance

Conlit Intumescent Pipe Wrap can provide up to 2 hours* fire rating to plastic pipework where it passes through walls and floors substrates.

* Subject to the application

PRODUCT INFORMATION

Property	Description
Pipe diameter	Up to 250mm O.D.
Width	40mm
Thickness	4mm at 32mm, up to 14mm at 250mm
Fire rating	Up to 2 hours*
Density	1.2g/cm ³
Expansion rate	20:1
Application temperature	-5 to 40°C
Shelf life	N/A if stored indoors in a cool, dry, ventilated area

* Subject to the application

STANDARDS AND APPROVALS

Certificate

Conlit Intumescent Pipe Wrap have been tested to BS EN 1366-3:2009.

Conlit® Intumescent Pipe Wrap

INSTALLATION

The product is intended to be wrapped around the outside diameter of the pipework and is secured by means of a self-adhesive strip.

Apertures or core holes in the separating element shall be maximum oversize with respect to the pipe diameter as follows:

Pipe Diameter (OD in mm)	Min. Thickness requirement
32mm - 50mm OD	4mm
160mm OD	10mm
200mm OD	12mm
250mm OD	14mm

Conlit Intumescent Pipe Wrap is then positioned each side within the compartment wall or floor so that the edge of the product is left exposed at the face of the wall or soffit. The remaining annular space/gap shall be infilled using Conlit Acoustic Intumescent Sealant or for larger void sizes, Conlit Intumescent Pipe Wrap can be sealed into the structure with Conlit Firestop Compound (see Figures 1 & 2 below).

Under fire conditions, the intumescent material expands against the structure and fills the void left by the burnt out plastic.

Where pipes are insulated, please refer to the Insulated Fire Sleeve data sheet.

Conlit Intumescent Pipe Wrap are used to prevent fire penetration in plastic pipes that pass through fire rated walls and floors for a specified period of up to 2 hours. They are manufactured as a sealed unit to the correct length and width to suit the pipe diameter and fire rating.

Walls should be a minimum of 100mm thickness and floors a minimum 150mm thickness. All walls should have the same or improved period of fire resistance as that required of the sealing system.

Services should be supported no further than 400mm from the surface of the separating element for walls and 400mm above the surface of the floor.

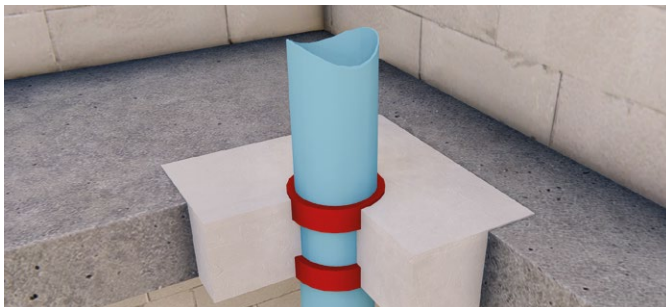


Figure 1
Conlit Intumescent Pipe Wrap sealed into compartment floor with Conlit Firestop Compound.

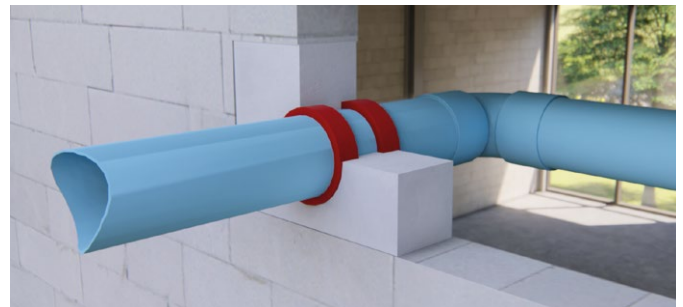


Figure 2
Conlit Intumescent Pipe Wrap sealed into a compartment wall with Conlit Firestop Compound.

INSTALLATION INSTRUCTIONS

1. Check that the pipe surface is clean and clear of debris, dust or loose particles.
2. Aperture temperature should be 5°C or greater at time of installation.
3. Ensure that the appropriate Conlit Intumescent Pipe Wrap is installed to suit the outside pipe diameter according to table 1..
4. An annular space will be required around the service to allow sufficient installation depth.
5. Wrap around pipe and fix with integral self-adhesive strip. Ensure that when installing the Pipe Wrap to the pipework, that it is installed 5mm proud of the substrate's surface.
6. For larger voids, Conlit Intumescent Pipe Wrap can be sealed into the structure with Conlit Firestop Compound.
7. Slide into position ensuring that both edges are exposed either side of walls and floors.
8. Annular gaps or spaces present after installation of Conlit Intumescent Pipe Wrap can be infilled using Conlit Acoustic Intumescent Sealant.

Note: Please refer to the relevant standard detail for maximum pipe size coverage and fire resistance rating achieved according to the seal type/application.

Conlit® Intumescent Pipe Wrap

DISCLAIMERS

1. ROCKWOOL is a manufacturer and supplier of stone wool materials. ROCKWOOL has no control over the final design, workmanship, necessary materials or applicable conditions which can impact predicted performance.
2. All recommendations made by ROCKWOOL and all calculations, drawings and other specifications or information supplied by ROCKWOOL (for example on design, workmanship, materials, geographic, environmental, and other specific or unique end-use conditions) are therefore completely free of liability and are supplied by ROCKWOOL as non-binding information. The customer remains obliged to examine the information received on its suitability for the specific purpose intended and, if necessary, by trial processing or creation of a trial area as well as with the involvement of architects, engineers, designers and contractors etc.
3. ROCKWOOL is not liable for any direct or indirect loss or damage in any form and for any reason whatsoever arising from the advice and/or information referred to in 2 and 3.
4. Any observation made by ROCKWOOL during site visit is strictly a visual observation of normal installation practice just as any technical information transmitted is for general illustration purposes only.
5. The General Terms and Conditions of ROCKWOOL shall apply to any service given. The current version of the General Terms and Conditions is available at www.rockwoolasia.com.

SUPPORTING INFORMATION

For further information relating to any aspect of the Conlit range, please refer to the applicable ROCKWOOL standard details at www.rockwoolasia.com or contact the **ROCKWOOL technical solution team**.

SUSTAINABILITY

As an environmentally conscious company, ROCKWOOL promotes the sustainable production and use of insulation and is committed to a continuous process of environmental improvement.

All ROCKWOOL products provide outstanding thermal protection as well as four added benefits:



HEALTH & SAFETY

ROCKWOOL stone wool insulation is non-hazardous and is not classified as carcinogenic according to the note Q of the Directive. 97/69/EEC and the regulation n° 1272/2008 (IV). ROCKWOOL stone wool insulation does not contain substances of very high concern (SHVC).

ENVIRONMENT

Made from a renewable and plentiful naturally occurring resource, ROCKWOOL insulation saves fuel costs and energy in use and relies on trapped air for its thermal properties.

ROCKWOOL insulation does not contain (and has never contained) gases that have ozone depletion potential (ODP) or global warming potential (GWP).

ROCKWOOL is approximately 97% recyclable. For waste ROCKWOOL material that may be generated during installation or at end of life, we are happy to discuss the individual requirements of contractors and users considering returning these materials to our factory for recycling.

ROCKWOOL Building Materials (Singapore) Pte. Ltd.

No 7, Tuas Avenue 1, Jurong Town,
Singapore 639492
T (+65) 6861 4722
F (+65) 6862 3533
Email: sgpfp@rockwool.com